


sweden & martina
magnetic
M A L L E T



WHAT IS THE MAGNETIC DYNAMIC TECHNOLOGY?



01

CONSERVATIVE

It moves, replaces, re-shapes and condenses the bone.
It never removes the bone, leaving soft tissues untouched.

1. 5.000G's of acceleration.
2. Magnetic-dynamic thrust.
3. Advanced electronic controller that allows the doctor to easily control the forces with the simple turn of a dial.

All this means that much more force is delivered just where the doctor needs it in a fraction of time as compared to using manual tools.

The graph shows the difference between the use of a hand mallet (purple line) and the Magnetic Mallet (blue line with standard handpiece at Force 4). It is 40 decaNewtons (Magnetic Mallet) applied in micro-seconds. It is force that allows the doctor to implement the procedures in a rapid, conservative and minimally invasive way.

It doesn't cut or drill, it conserves the bone and does not increase bone temperature.



01: comparison of applied forces (daN/μs) :
Magnetic Mallet Level 1, 2, 3, 4 VS Manual-Surgical Hammer Tests conducted at CNR – Centro Nazionale di Ricerca – University of Milan – MIUR

02

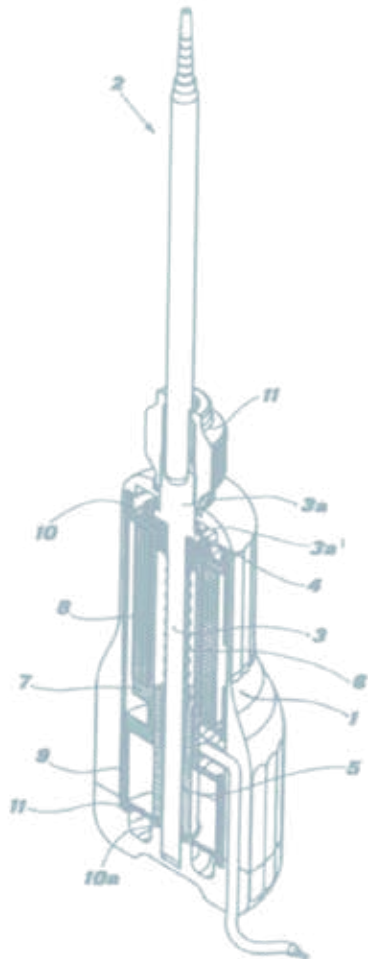
SPEED

The Magnetic-dynamic impulse delivers much more force than manual tools. This means increased effectiveness during a procedure.

03

PRECISION

The kinetic energy forces are delivered precisely to the treatment area limiting dispersion to the craniofacial mass. This level of precision provides more comfort for the patient during the procedure.



MAGNETIC MALLET

Ref. [MMUKPLUS-NEW](#)



HANDPIECE PLUS

Magnetic Mallet is now equipped with the "Handpiece plus". The Handpiece Plus allows the delivery of a calibrated pulse which results in force levels 30% greater as compared to the previous handpiece.

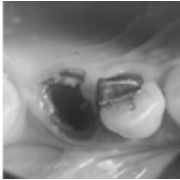
Ref. [MAGNETICMALL-MAN-PLUS](#)



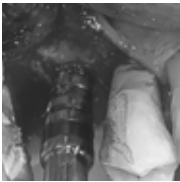
WHAT YOU CAN DO WITH THE magnetic M A L L E T



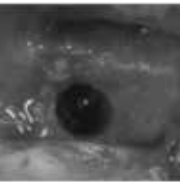
**CROWN
REMOVAL**



**IMPLANT
PLACEMENT**



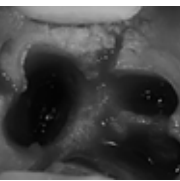
OSSEODENSIFICATION



SINUS LIFT



**RIDGE
SPLIT**



EXTRACTION

EXTRACTION

**RIDGE
SPLIT**

**IMPLANT
PLACEMENT**

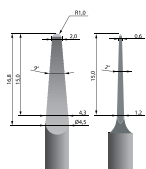
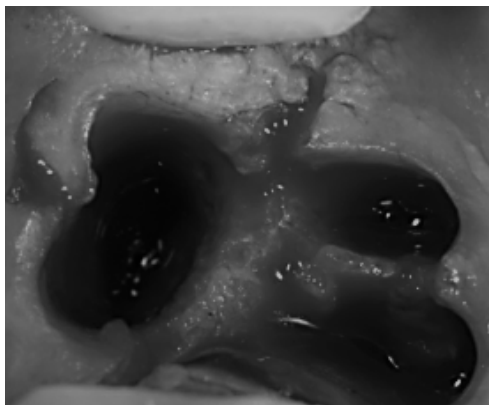
ACCESSORIES



EXTRACTION

Assortment with 5 off-set instruments.

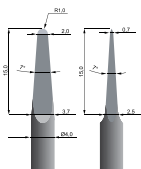
Ref. **EXTRA-MIX**



EXTR1

SHARP AND RESISTANT

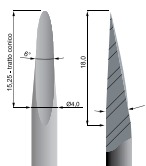
Ref. **MM-F-EXTR1C**



EXTR4

THIN LEVER
3rd MOLARS LUXATION

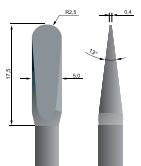
Ref. **MM-F-EXTR4C**



EXTR2

CONCAVE PROFILE
REDUCED HEIGHT

Ref. **MM-F-EXTR2C**



EXTR5

THICK LEVER
3rd MOLARS LUXATION

Ref. **MM-F-EXTR5C**



EXTR3

CONCAVE PROFILE
TOTAL HEIGHT

Ref. **MM-F-EXTR3C**



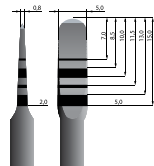
OFF-SET VERSION

All the instruments can also be ordered individually with the mentioned ref.

RIDGE SPLIT

Assortment with 5 straight instruments + 5 off-set ones.

Ref. **SPLIT-MIX**

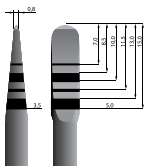


EXP1

EXPANDER 1

Ref. **MM-F-EXP1D** *

Ref. **MM-F-EXP1C** **

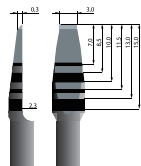


EXP2

EXPANDER 2

Ref. **MM-F-EXP2D**

Ref. **MM-F-EXP2C**

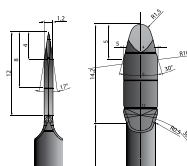


EXP3

EXPANDER 3 WITH DISPLACER
SIDE AND THE PASSIVE SIDE

Ref. **MM-F-EXP3AD**

Ref. **MM-F-EXP3AC**

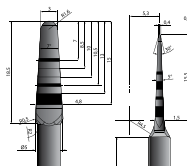


SPLIT

FIRST INVITATION
IN THE CREST

Ref. **MM-F-SPLIT1D**

Ref. **MM-F-SPLIT1C**



CUT

INITIAL
EXPANDER

Ref. **MM-F-CUTD**

Ref. **MM-F-CUTC**

All the instruments can also be ordered individually with the mentioned ref.

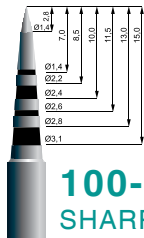
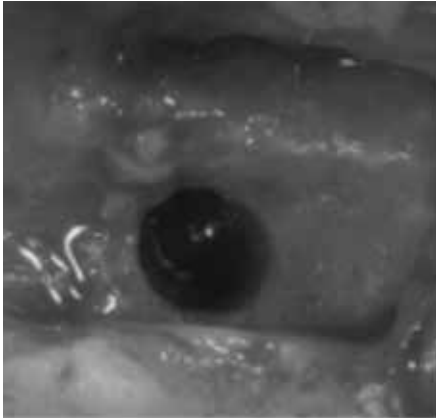
*The straight version includes a "D" at the end of the ref.

**The off-set version includes a "C" at the end of the ref.

OSTEOTOME

Assortment with 5 straight instruments + 5 off-set ones.

Ref. **OSTEO-MIX**

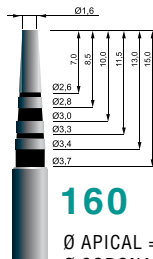


100-P
SHARP TIP

Ø APICAL = 1,0
Ø CORONAL = 3,1

Ref. **MM-F-100PD**

Ref. **MM-F-100PC**

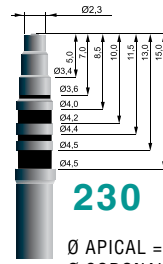


160

Ø APICAL = 1,6
Ø CORONAL = 3,7

Ref. **MM-F-160D**

Ref. **MM-F-160C**

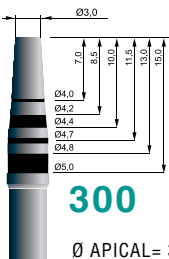


230

Ø APICAL = 2,3
Ø CORONAL = 4,5

Ref. **MM-F-230D**

Ref. **MM-F-230C**

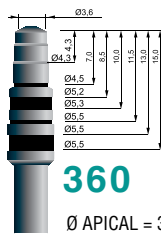


300

Ø APICAL = 3,0
Ø CORONAL = 5,0

Ref. **MM-F-300D**

Ref. **MM-F-300C**



360

Ø APICAL = 3,6
Ø CORONAL = 5,5

Ref. **MM-F-360D**

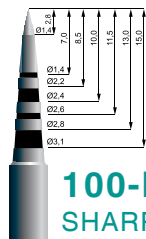
Ref. **MM-F-360C**

All the instruments can also be ordered individually with the mentioned ref.

OSTEOTOME

Assortment with 5 straight instruments + 5 off-set instruments.

Ref. **OSTEO-MIX2**

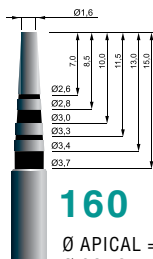


100-P
SHARP TIP

Ø APICAL = 1,0
Ø CORONAL = 3,1

Ref. **MM-F-100PD**

Ref. **MM-F-100PC**

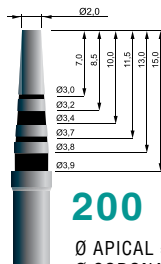


160

Ø APICAL = 1,6
Ø CORONAL = 3,7

Ref. **MM-F-160D**

Ref. **MM-F-160C**

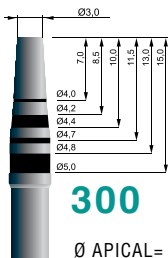


200

Ø APICAL = 2,0
Ø CORONAL = 3,9

Ref. **MM-F-200D**

Ref. **MM-F-200C**

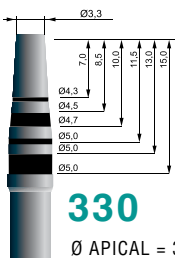


300

Ø APICAL = 3,0
Ø CORONAL = 5,0

Ref. **MM-F-300D**

Ref. **MM-F-300C**



330

Ø APICAL = 3,3
Ø CORONAL = 5,0

Ref. **MM-F-330D**

Ref. **MM-F-330C**

All the instruments can also be ordered individually with the mentioned ref.

CROWN REMOVER

The **Crown Remover** is an optional accessory of the Magnetic Mallet that develops longitudinal traction.

Also in this case the forces are applied with such an acceleration that prevents them from dispersing, causing inertias that are dangerous for the integrity of the elements to be removed.

Ref. [MAGNETICMALLET-LC](#)





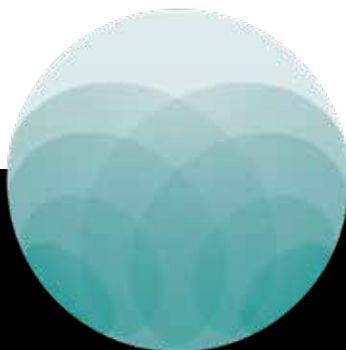
Meta Ergonomica, located in Turbigo (MI), Italy, has developed and patented the use of magnetic-dynamic forces in oral surgery. Its mission is to design and manufacture medical devices that allow implementation of procedures in controlled, precise and conservative manner.

Meta Ergonomica is ISO13485:2016 certified by Tuv Rheinland S.r.l. (1936) and by FDA.





rev. 11-22



META ERGONOMICA - MANUFACTURER

Via Monte Nero, 19
20029 TURBIGO (MI) - ITALIA

OSSEOTOUCH - DISTRIBUTOR

Piazza Garibaldi, 9
21013 GALLARATE (VA) - ITALIA
Tel +39 03311535586
www.osseotouch.com
contact@osseotouch.com


sweden & martina

EXCLUSIVE DISTRIBUTOR FOR UK:

Sweden & Martina Ltd.

Unit 1b

Amberley Court, Whitworth Road
Crawley, West Sussex, RH11 7XL

Toll free 0800 1123575

info.uk@sweden-martina.com

www.sweden-martina.com