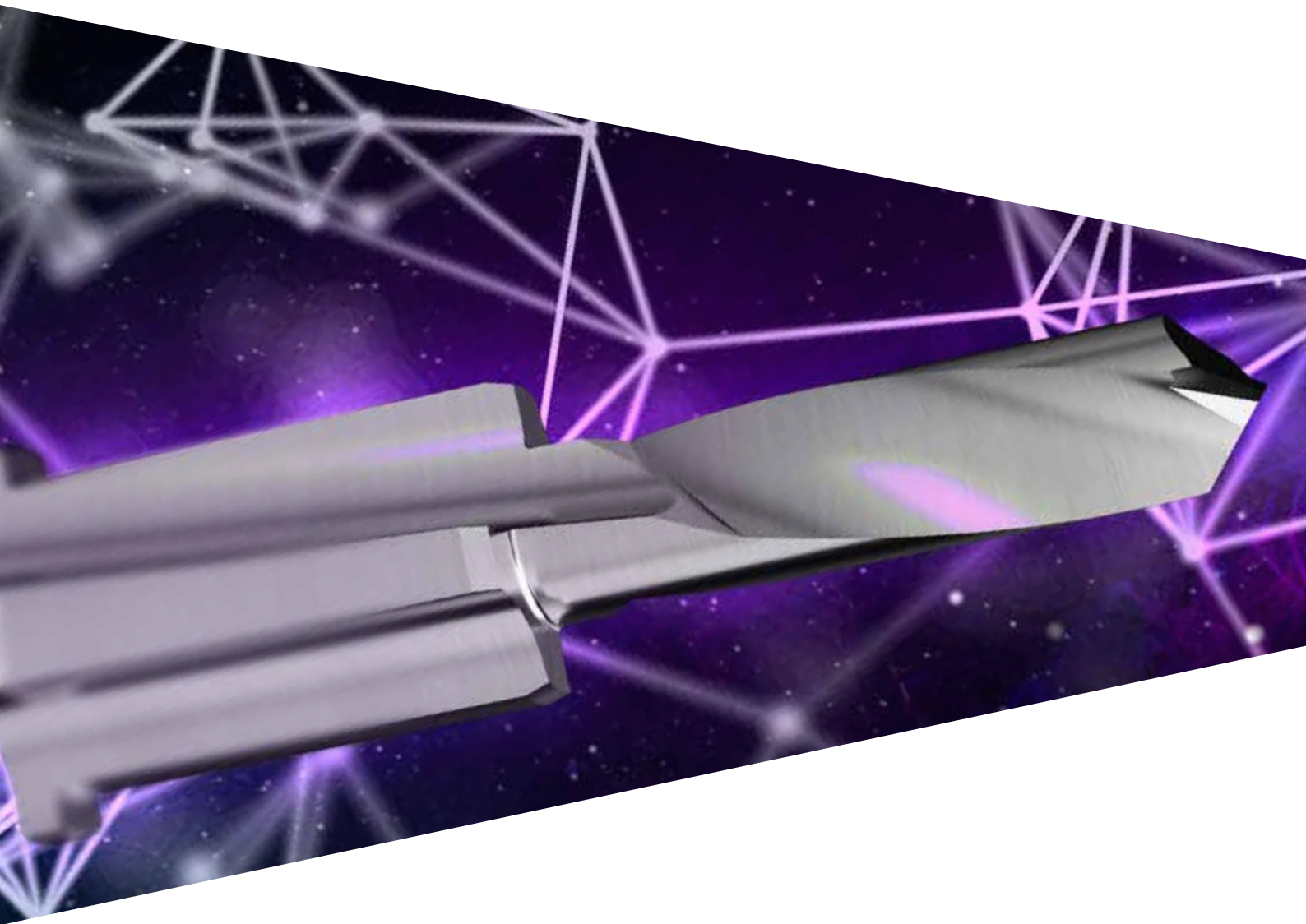


# ECHOPLAN PRO



**“This is the moment to keep up with the times.**

**Progress and science are changing all the world of medicine and with it also the branch of dentistry. Those pushed us to change, to use the aid of equipment and PCs not as a substitute for our skills but to assist us in studying the cases from a different point of view, broadening our opportunities.**

**We cannot ignore this, neither as professionals nor as companies.**

**Now we can study the cases in 3D: we manage to “photograph” the patient and, literally, take him/her inside our PC, not limiting ourselves with an image which is flat, abstract and far from reality (the old 2D) but seeing the real anatomy and the real patient, with the opportunity to study him/her deeply as he/she deserves. The digital format gives us the opportunity, without any invasiveness, to assess all the possible ways and so find the best possible solutions for our patients.**

**We are not opting for a technique and then transporting it into a mouth, but we are working on THAT mouth with the most suitable technique for THAT patient.**

**This is the digital format: an opportunity that our times are offering us”.**

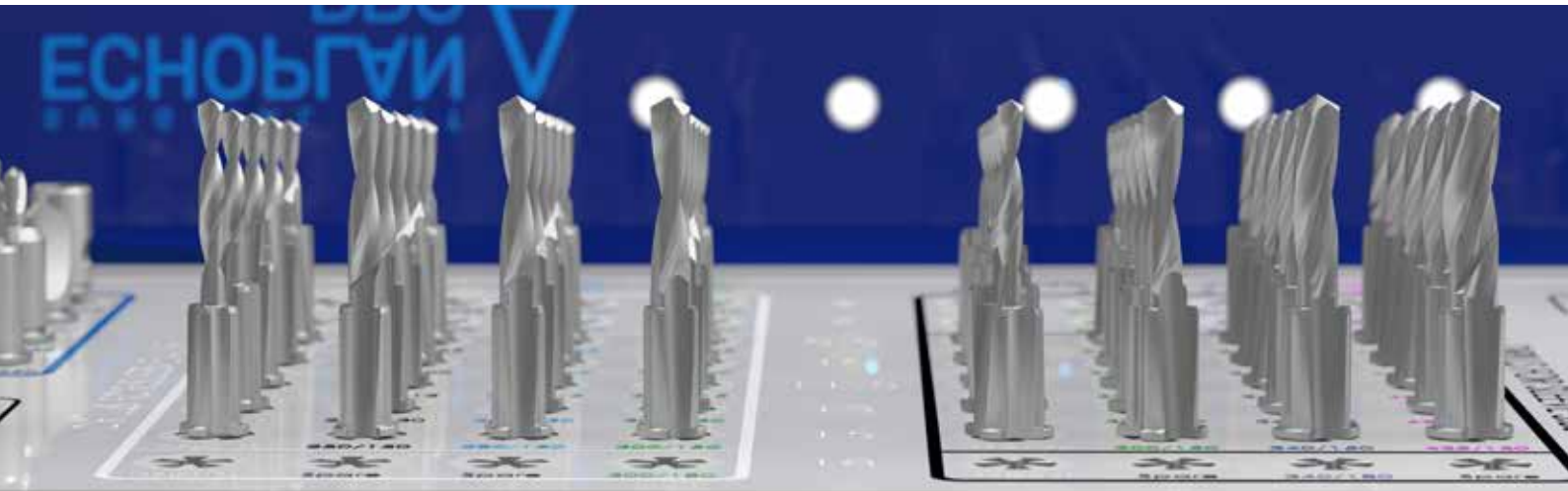
**(Carlo Scarpa - Project Manager Guided Surgery, Sweden & Martina)**

# Echoplan PRO

The option of a prosthetically guided surgery offers countless advantages, first and foremost the **opportunity to plan in detail every step** of the implant-prosthetic surgery with a significant saving of time and with a greater **predictability of results**.

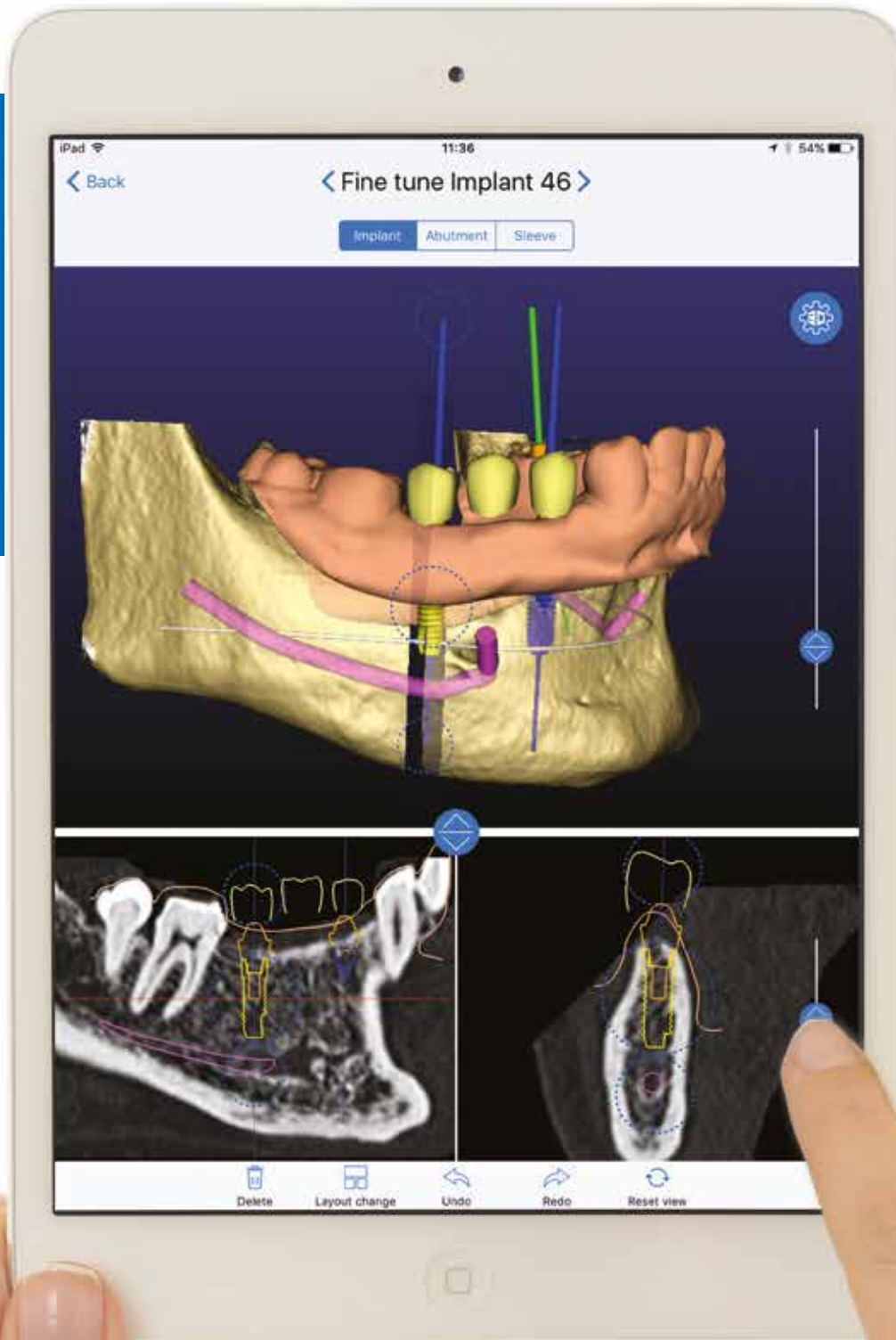
An effective diagnosis and an accurate planning of the treatment represent crucial steps to achieve a functional and aesthetic result, with the added value of **limiting invasiveness and discomfort for the patient**.

Sweden & Martina makes all this possible thanks to its digital stream, that with dedicated surgical kits according to the type of implant to be inserted and its qualified servicing, ensures that the digital option is truly within everyone's reach.



# RealGUIDE Software & App

From prosthetic to surgical planning



POWERED BY



In order to approach digital implant diagnosis and planning, with all the advantages of a prosthetically guided procedure, it is no longer necessary to face long software learning curves: **with RealGUIDE the entire process is intuitive and simple, at one's fingertips.**

In addition to the **software**, the new **app RealGUIDE** is also available for download from Apple's App Store.



A certified diagnosis, design and modeling universal platform compatible with any DICOM and STL.



Data always available anywhere thanks to the **CLOUD platform**.



Extremely **user friendly**, you can manage your patient with a fingertip.



No initial costly investment, thanks to the **monthly subscription** management of the entire platform.



**Accessible to all** thanks to the numerous license opportunities dedicated to doctors, dental technicians and students.



**Share and discuss the clinical case** with colleagues, the dental technician or the radiologist, thanks to the integrated communications system.



2D/3D visualization and design on the iPad.



Native system for **PC, MAC** and **mobile** platform.

The **Digital Services Center** can assist you through all the steps of the digital stream, from implant-prosthetic planning to the design and printing of the surgical template.

#### The added value?

Sweden & Martina's expertise and its dedicated assistance, that works for you and with you.

# Planning: the 6 crucial steps

PRECISION  
IMPRESSION



MAKING OF THE  
RADIOGRAPHIC TEMPLATE



RADIOLOGICAL  
EXAMINATION (CBCT)



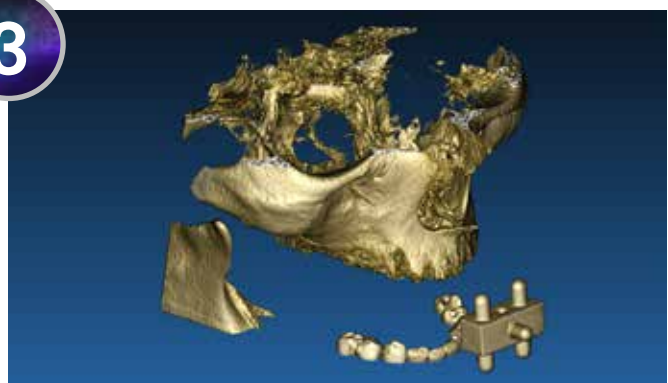
Precision impression and making of the transparent resin duplicate of the patient's mobile prosthesis (after having carried out an accurate relining of the latter).



Making of the radiographic template (Evobite) and subsequent scanning (with a laboratory optical scanner) of the elements. The STL files are obtained.



Radiological examination (CBCT) with the Evobite template previously made on the plaster model. The DICOM file is thereby obtained.



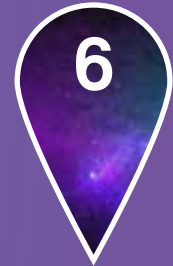
COUPLING DICOM AND STL  
FILES (BEST FIT)



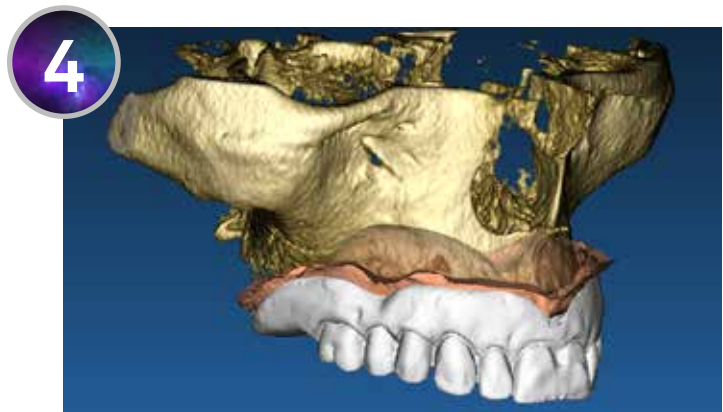
PROSTHETICALLY GUIDED IMPLANT  
POSITIONING



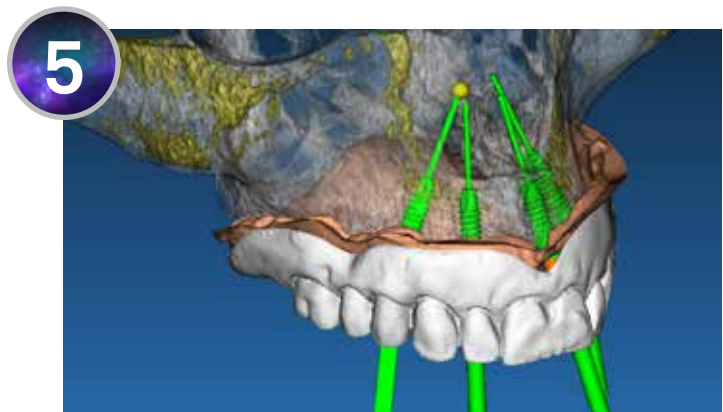
DESIGN AND DIGITAL  
PRINTING



Coupling (Best Fit) between the DICOM file and the STL files in order to be able to visualize hard tissues, soft tissues and prosthetic component. Possibility to carry out a precise and accurate diagnostics.



Diagnosis and planning: prosthetically guided implant positioning. Possibility of selecting not only the implants, but also the posts depending on the patient's anatomy. Ideal for functional and aesthetic study.



Design stage and digital printing of the surgical template and of the holed model for the analogues.



# The complete Universo Digitale delivered to your clinic



Once the project has been defined and confirmed, the Sweden & Martina technicians will arrange for the design and the printing of the surgical template and of the holed model for the analogues that will respect the position of the planned implants. If requested, Sweden & Martina will also make the temporary prosthesis in PMMA and the cobalt-chrome laser-melted framework. All the material will be sent in one go inside the Universo Digitale box on time for the surgery, together with a form containing the surgical procedure to be used for the preparation of the osteotomy relating to the planned implants. If requested, Sweden & Martina will also arrange for the insertion inside the box of analogues, posts and dental implants relating to the planned case.







**Surgical template:** the sleeves with the hexagonal shaped contacts allow to find the exact position of the connection hexagon of the planned implant during surgery. In case of immediate loading, this morphology allows an easy insertion of the prosthetic components that is delivered prior to surgery.



**Holed model for the analogues:** the model is printed with the holes calibrated on the basis of the planned implants. Ideal both to test the quality of the fit of the surgical template and for a prosthodontic study of the case.



**Silicone bite:** it is made only upon the client's specific request. The use of the silicone bite facilitates the positioning and the stability of the surgical template during the fixation pins insertion stage.



**Temporary prosthesis in PMMA and corresponding laser-melted framework:** upon a doctor's request, the Sweden & Martina's Milling Center can mill and deliver prior to surgery the required prosthetic components necessary to carry out immediate loading protocols.

# Echoplan PRO

## The complete guided surgery in three kits

So as to allow to perform a guided surgery with all the Sweden & Martina implants, **3 complete and ergonomic surgical kits** have been designed **that include all the instruments required to carry out an entirely computer-assisted surgery.**

The order of use of the instruments in the tray is intuitive and immediate, so the clinician and the assistant can manage the kit very simply and rapidly. **The kits can be complemented by adding the drills (optional) according to the type of implant to be inserted.**

The Echoplan PRO kits are also suitable for a combined use with software different from RealGUIDE, provided that the implants are included in the software libraries and that the software houses print the surgical template with the Sweden & Martina sleeves.

Contact the Digital Services Center (+39 0499124248 / +39 0499124250) for further details.

### ECHOPLAN PRO-A

**For a guided insertion of the cylindrical implants Premium ONE and Prama**

The kit also includes spaces for drills for the preparation of short implants h 6 mm and 7 mm, and long implants h 18 mm. These drills are optionally available.



### ECHOPLAN PRO-E

**For a guided insertion of Outlink<sup>2</sup> cylindrical implants with an external hexagon**

The kit also includes spaces for drills for the preparation of short implants h 5 mm and 7 mm, and long implants h 18 mm. These drills are optionally available.



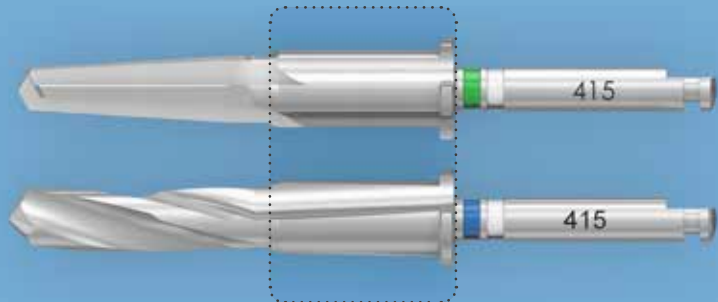
### ECHOPLAN PRO-S

**For a guided insertion of Shelta, Syra and Prama RF tapered implants**

The kit also includes spaces for drills for the preparation of short implants h 4 mm, 5 mm and 6 mm, and long implants h 18 mm. These drills are optionally available.



The drills of the Echoplan PRO kits have **depth stops already integrated** in the body of the drill itself. This specific characteristic makes these **instruments extremely practical, allows a faster workflow and optimizes surgical times.** The grooves on the drill's body-guide allow a greater inflow of saline solution inside osteotomy cooling down bone more effectively and reducing the friction between the drill and the guide sleeve.



## MOUNTER ORGANIZER

A mounter tray is also available in order to give the doctor greater freedom to supply and to organize freely the quantity and type of mounters. Thereby the doctor can order separately the mounters required for each surgery and then replace them in an orderly manner.

Spaces for mounters suitable for 4.15 sleeves.



Spaces for mounters suitable for 5.50 mm sleeves.

Spaces to position the implant holding vial during the mounters connection stage.



rev. 07-18



**Sweden & Martina S.p.A.**

Via Veneto, 10  
35020 Due Carrare (PD), Italy  
Tel. +39.049.9124300  
Fax +39.049.9124290  
info@sweden-martina.com

[www.sweden-martina.com](http://www.sweden-martina.com)

**Sweden & Martina Ltd**

Unit 45  
Basepoint Business Centre  
Metcalf Way, Crawley,  
West Sussex, RH11 7XX, UK  
Toll free 0800 1123575  
info.uk@sweden-martina.com

**Sweden & Martina Inc.**

**Distributor for U.S.**  
80 Broad Street, 5<sup>th</sup> floor, Suite 502  
New York, NY 10004  
Toll free 1-844-8MARTINA (1-844-862-7846)  
info.us@sweden-martina.com

[www.sweden-martinainc.com](http://www.sweden-martinainc.com)

**Sweden & Martina Mediterranea S.L. - España**

info.es@sweden-martina.com  
**Sweden & Martina Lda - Portugal**  
info.pt@sweden-martina.com

The products contained in this brochure conform to the ISO 9001 and ISO 13485 standards and are certified with the CE Mark (Class 1) and CE0476 Mark (Class IIA and Class IIB) in compliance with the Regulation (EU) 2017/745 on Medical Devices. They conform to the QSR and to the 21 CFR Part 820 and they are approved by FDA.

The Sweden & Martina plant manufactures Medical Devices in compliance with the CGMPs in force in the USA and in other countries worldwide.



Some products may not be regulatory/released for sale in all markets.  
All trademarks herein are the property of Sweden & Martina S.p.A. unless otherwise indicated.  
This material is intended for laboratories and clinicians and is not intended for patient distribution.  
This material is not to be redistributed, duplicated, or disclosed without the express written consent of Sweden & Martina S.p.A.  
For additional product information, including indications, contraindications, warnings, precautions, and potential adverse effects, see Sweden & Martina S.p.A. website.

The contents are updated at the time of publication. Check with the company for any subsequent updates.