

GUIDED SURGERY

SWEDEN & MARTINA

 ARCHIPLAN 3D Software Suite

by 3DIEMME

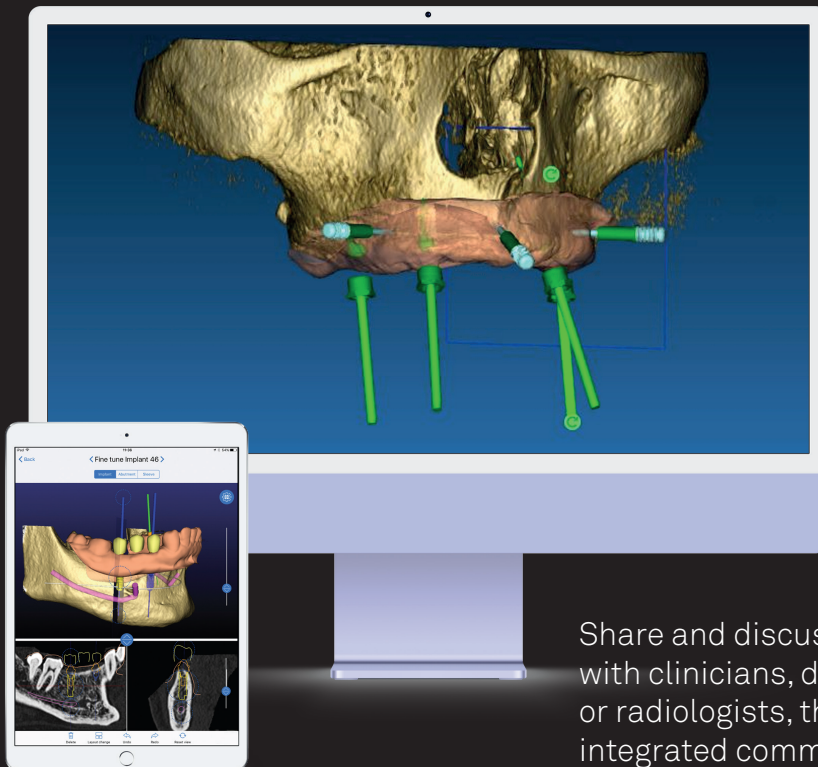
Improve your workflow

Universal platform for diagnosis, implant planning, designing and printing surgical guides, and prosthesis modelling. Compatible with DICOM and STL files from any device.

2D/3D
visualization and
implant planning
also on iPad

Patient data
archived on
your computer
and available
on-demand during
active projects
through the
CLOUD platform

PC, MAC and
mobile platforms
(Apple iOS)
native system



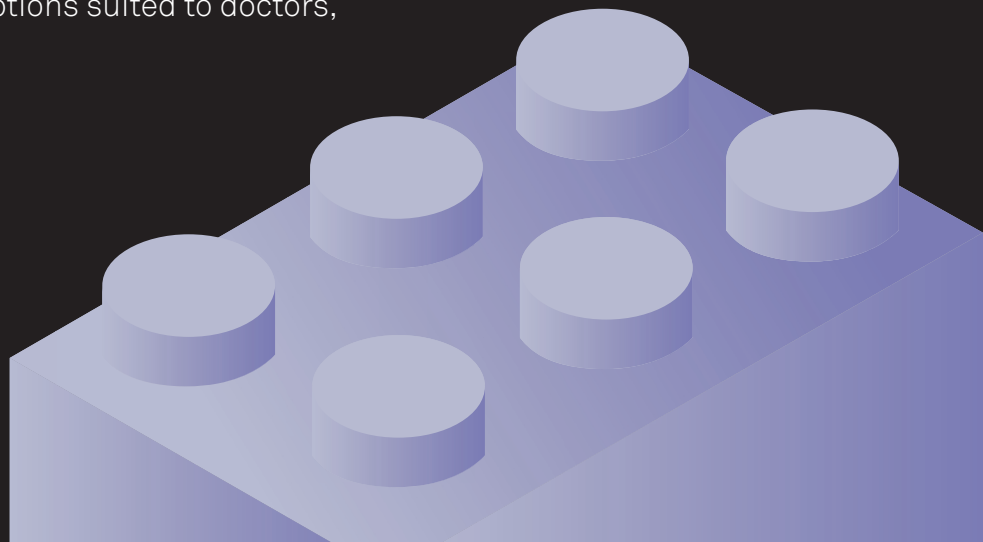
Low initial
investment, thanks
to affordable monthly
subscriptions and
low click fees

EU certification
MDR and clearance
FDA, system
compliant quality
ISO 13485: 2016

Share and discuss the clinical case
with clinicians, dental technicians
or radiologists, thanks to the
integrated communication system

Extremely easy to use! Manage your virtual patient's case with a simple "click"!

Open to all implant systems and accessible to everybody,
thanks to the multiple licensing options suited to doctors,
dental technicians and students



PRODUCT DESCRIPTION

Archiplan 3D is not only a software, but also a **complete digital platform**. It allows you to **cooperate** and **discuss** different clinical cases with an entire **team of experts**.

TECHNICAL CHARACTERISTICS

Archiplan 3D START: free
Archiplan 3D APP: viewer application available only in the Apple Store

CODES

CODE	DESCRIPTION
SWM00077	Annual subscription Archiplan Software Pro
SWM00082	Annual subscription Archiplan Software Design
SWM00065	Annual subscription Archiplan Software Cad (cloud 50 patients)
SWM00066	Annual subscription Archiplan Software Cad+ (cloud 100 patients)