

f22 ALIGNER

Orthodontic
treatment
with invisible
aligners entirely
made in Italy.



stay aligned ;)



UNPRECEDENTED
FITTING AND
TRANSPARENCY TO
REVOLUTIONISE
MARKET STANDARDS

ABOUT **F22 ALIGNER**

Scientific research and clinical experience

F22 is the result of **more than 20 years of experience** and of the **ongoing researches** carried on by the the School of Orthodontics in Ferrara University. Over the years, the orthodontic clinic has treated hundreds of patients with invisible aligners. This has allowed the researchers of Ferrara University to analyse all aspects and consequently make improvements regarding ideal arch forms, aesthetics, treatment planning and materials to be used.

The F22 system consists of **a series of thin removable orthodontic appliances** (aligners) that are made-to-measure, using an exclusive transparent plastic material. These aligners allow the patient's teeth to be moved gradually and progressively from their original location to an optimal position that ensures an aesthetically attractive and functionally valid occlusion.





PRODUCTION LOCATION OF **F22 ALIGNER**

Headquartered in Padua, Italy, Sweden & Martina has centralised the production of its medical devices in order to have a **direct control over the entire production chain** and, therefore, overall responsibility for the product.

F22 is produced within the F22 Center, a dedicated laboratory for the production of the invisible aligners.

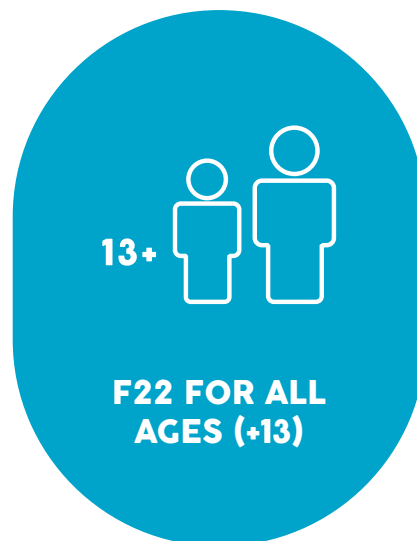
Each F22 aligner is the result of the continuing synergic cooperation between the orthodontists specialized at the University of Ferrara and the technicians of Sweden & Martina, which together form the 'F22 Team'.



WHY THE F22 ALIGNER?

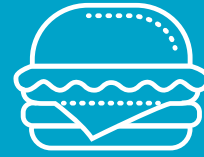
Constant assistance

The clinician who decides to work with F22 **will immediately be supported by a tutor**, i.e., a specialised orthodontist from the University of Ferrara School of Orthodontics, who will accompany him or her throughout the treatment. Whenever any doubts or questions come up, a team of experienced orthodontists who have taken on the case will be available for a direct and immediate discussion of the situation.





**CLEANING AND
CHECK UPS**



**NO
RESTRICTIONS**



Loading

DESIGN



**INVISIBILITY
AND CHROMATIC
STABILITY**



**LIGHT AND
CONSTANT FORCES**

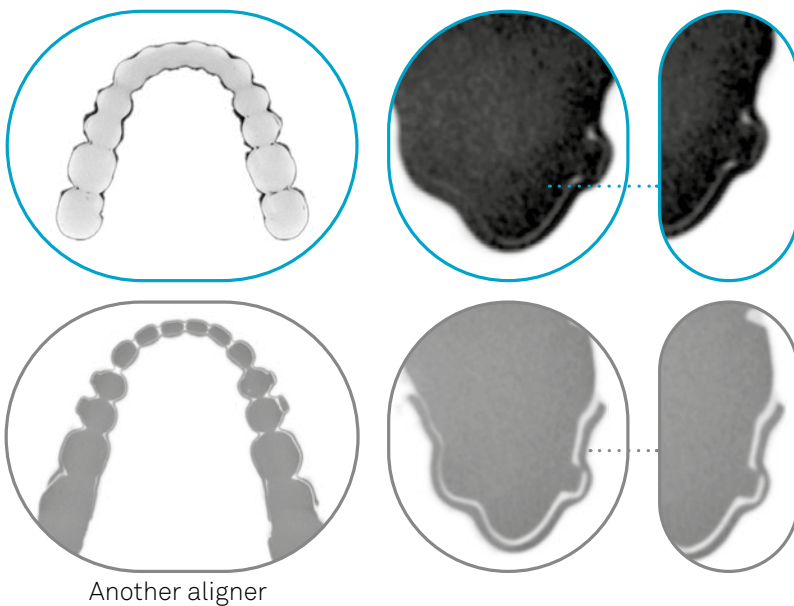


**INVISIBLE,
PRACTICAL, AND WITH
MAXIMUM COMFORT**

INVISIBLE, PRACTICAL, AND WITH MAXIMUM COMFORT

Optimal fitting

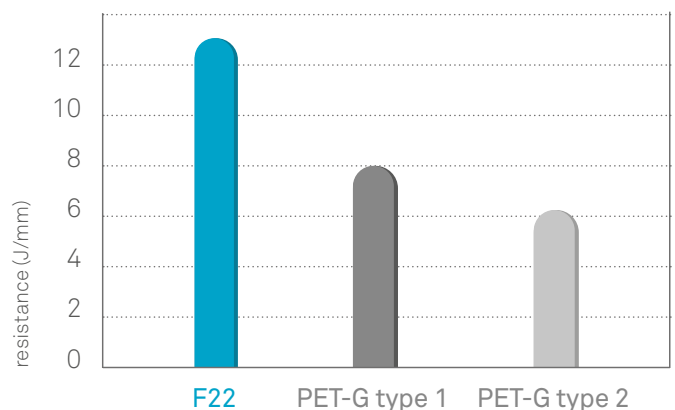
A recent study* published on the official magazine of the Italian Society of Orthodontics shows that F22 obtains 73.6% of the digitally planned corrections. This is a much higher value than the one reported in literature on existing studies carried on other dental aligners and it derives from a **higher, more precise fitting**, from a **better retention** and from the careful planning of the orthodontic movements, exclusively done by expert Orthodontists.



Another aligner

Light and constant forces

Thanks to the **elasticity of the material** which is 20% higher than the materials used until now in the production of aligners*, F22 transmits light and constant forces that make greater tooth movement possible, ensuring even faster and more comfortable treatments.



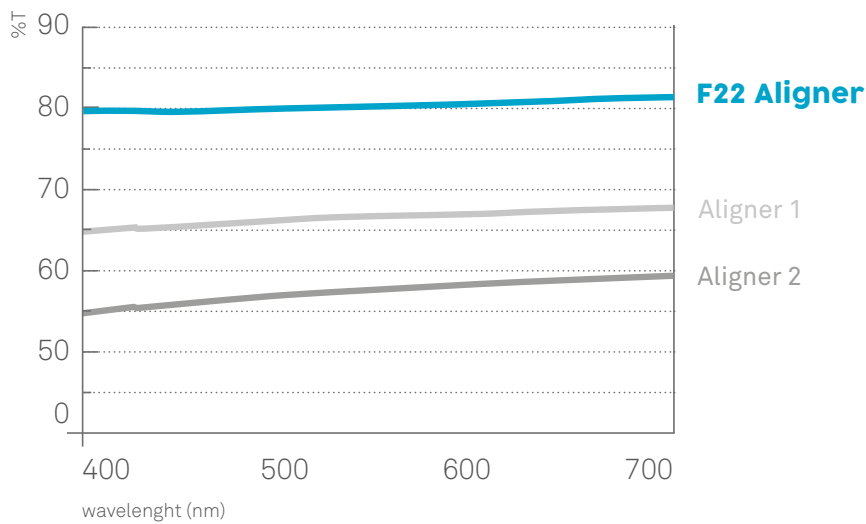
*Lombardo L., Arreghini A., Ramina F., Huanca Ghislanzoni L.T., Siciliani G. - Predictability of orthodontic movement with orthodontic aligners: a retrospective study. Prog Orthod. 2017 Nov 13;18(1):35

** Lombardo L., Martinez E., Mazzanti V., Arreghini A., Mollica F., Siciliani G. - Stress relaxation properties of four orthodontic aligner materials. Angle Orthodontist, Vol 87, No 1, 2017; 87(1):11-18

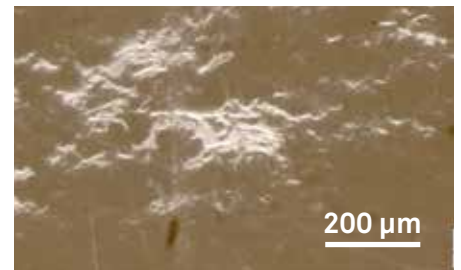
Invisibility and chromatic stability

F22 is the first truly invisible aligner*. The absence of structural defects thanks to the **manual control and finishing of each aligner**, allows a more natural effect.

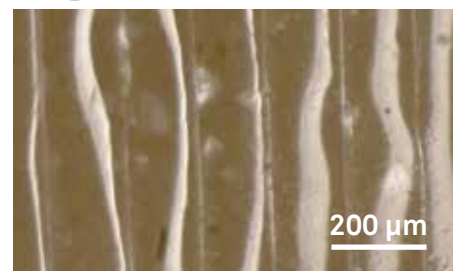
Studies conducted by Professor Siciliani and his team using food colouring at 37°C for 14 days show that even under the most extreme conditions, F22 does not retain plaque or pigments, **maintaining its initial level of transparency**. The perfectly smooth surface and the properties of the material used guarantee simple hygiene, limiting the retention of pigments.



F22 Aligner



Aligner 1



Aligner 2

*Lombardo L., Arreghini A., Maccarrone R., Bianchi A., Scalia S., Siciliani G. - Optical properties of orthodontic aligners. Spectrophotometry analysis of 3 types before and after aging; Prog Orthod 2015 Nov; 16:41

INVISIBLE, PRACTICAL, AND WITH MAXIMUM COMFORT

Design

One of the features that sets the F22 apart from other aligners on the market is that the elements' movements are not programmed by software. Instead, a **specialised team studies each individual case analytically, planning every movement to the tenth of a millimetre**, to guide the treating dentist all the way to the end of treatment.

A special clinical protocol for tooth movement guides the production of every single set-up, avoiding unpredicted tooth movements and reducing treatment times. Scrupulous precision control of all production phases is the only way to guarantee products of such an exceptionally high quality.

There is the possibility to match the **invisible treatment with pontics**, that guarantee to the patient an excellent aesthetic result while wearing aligner and at the same time the preservation of the spaces in case of a missing element.



To know the F22 team
scan the QR code!



sweden & martina

f22
ALIGNER





Cleaning and check ups

With the F22 invisible orthodontic appliance, there will be **less chair time and fewer check-ups**, because there are no wires or brackets to adjust.

It will be sufficient to give the patient new aligners periodically, after checking the developments and progress of the treatment.



No restrictions

When a patient is offered orthodontic treatment, one of their first fears is that of being restricted in his eating and living habits. However, with the F22 invisible aligner, patients will have the freedom to continue living their normal lives by simply removing the appliance as needed.

F22 for all ages (+13)

The F22 aligner system is **suitable for all patients, ages 13 and up**. Hence, clinicians with even the most demanding patients, whether older or not, can offer them an orthodontic solution that will preserve aesthetics and ensure excellent results.



F22 YOUNG

F22 Young is a solution that **responds to the clinical and aesthetic needs in the in growing patients**, in case of II class malocclusion with the mandibular retrusion in mixed dentition.

F22 Young is an **innovative** product which combines the aesthetic advantages of the aligner with the characteristics of the traditional brace. Thanks to the **high comfort and aesthetic impact**, clinician will obtain the necessary collaboration to achieve the objective of a correct occlusion, even in growing patients.

The aligner F22 Young is a **custom treatment** designed by Team F22 based on the specific occlusal characteristics of each patient.

The F22 Young has a superior customized anterior block able to push the mandible forward realized with the same material of the aligner. This allows the lower arch to slide comfortably towards the therapeutic position of advancement, identified in the digital design by F22 Team.



The latest studies and follow up by the F22 Team show that F22 Young **allows a correct mandibular growth** if used in proximity of the pick of growing. This permits to reduce the sagittal discrepancy of both the maxillary bones in patients with II Class malocclusion characterized by a retruded mandible.

Choose F22 Young means to offer to the youngest patients a product:

- Highly versatile thanks to the possibility to combine the aligner with quick expander of the palate after the expansion phase, or to other Class II correction devices;
- entirely custom-design by F22 Team;
- invisibility and comfort. The F22 Young aligner are made of Evoflex to ensure perfect fit and invisibility;
- quality: every aligner is checked and finished by hand by our specialized technicians;
- simplicity in cleaning and freedom. Before each meal young patients only have to remove the aligner. After meal they just need to wash it with a little warm water and toothpaste before put it back in the mouth.

THE CONVENIENT AND SAFE POST-TREATMENT RETAINERS

Thin, comfortable, and discreet post-treatment retainers.

To avoid that time and the natural movements of the mouth jeopardise the results obtained, it is important for patients to use retainers. This **will increase the patient's satisfaction over time**, with minimal impact on his or her daily habits.



QUALITY

Manufactured of the same material as the aligners, the retainers are also transparent, whilst at the same time they are very flexible, so they always guarantee the **patient total comfort** and a **perfect fit** in their mouth.



FREEDOM

The F22 Fix retainers should be worn **once the alignment treatment has been completed**. Depending on the case assessment, a patient may be instructed to wear the retainer for a few hours during the day and night, or even just at night. F22 tutors will always be available to discuss the best way for each case to be progressively weaned off the retainers.



CONVENIENCE

Retainers are made according to a design already developed by the F22 team of specialists, so they are very reasonably **priced for both you and your patients**.



DUAL BENEFIT

F22 Fix allows patients to receive the F22 Perfection **whitening treatment at any time**, since the retainers can be used directly. This increases the patient's satisfaction with the treatment as well as its duration over time.



F22 FIX
RETAINERS

F22 HYBRID ALIGNER



THE **MAXIMUM AESTHETIC** AND **BIOMECHANICAL SOLUTION**

With F22 hybrid, the most complex cases with a hybrid approach

The hybrid approach allows **maintaining a reduced number of aligners** in a **reasonable treatment time** even in case of severe crowding and in case of problems regarding the mesio-distal inclination of the roots. F22 Hybrid consists in the union of the invisible aligner with small lingual buttons that maximize the movement of the entire element and not only of the crown.

**INDIRECT
BONDING**

**REDUCED
DIMENSIONS**

**SECURE
FIT**

Hybrid solutions are the results of careful planning and research by the F22 Team, to meet the result also in complex cases when aligners have to make complex movements with low predictability*.



F22 PERFECTION



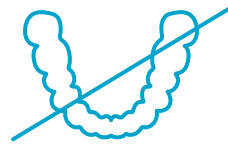
Guaranteed effectiveness

Years of research, tests on patients and spectrophotometric measurements carried out by the researchers of the University of Ferrara prove the effectiveness of the whitening treatment, while guaranteeing that the use of the F22 Perfection whitening product in combination with the F22 aligner does not interfere at all with the ongoing orthodontic treatment; the aligner's transmittance and absorbance values also match perfectly*.

User-friendly

F22 PERFECTION has a 6% hydrogen peroxide solution-based formulation with no added urea, suitable, in terms of concentration and consistency, to be used with F22 Aligners: indeed it is a **spray**. Each spray deposits a film which does not thicken and **does not drip** inside the aligner. It **is easy to use** for the patient, handy for closing and transport.

- Pleasantly mint flavoured;
- the protocol envisages a non-stop 90 minute treatment for 7 days, possibly repeatable;
- the outcome of the treatment with F22 Aligner is not guaranteed should whitening products different from F22 PERFECTION be used.



No additional aligners

The treatment **is simple, fast and cost-effective; it does not require additional aligners**, nor the taking of dental impressions, since the F22 Aligner itself is used as a bite. The **orthodontic and whitening treatments are simultaneous**, with no additional time required on the dental chair and without extending the duration of the pre-planned orthodontic treatment.



F22 PERFECTION

THE NEW FRONTIER IN TEETH WHITENING

F22 PERFECTION has been specifically formulated to be used on F22 Aligners: from now on you may offer your patients a very simple teeth whitening protocol during the F22 Aligner treatment!





THE **MATERIAL**:
CONTROL ON TEETH
MOVEMENT

Evoflex dominates teeth movements

The material the aligner is made of has a strong effect on the success of the treatment and on the experience of the patient. It is just as important as the treatment plan.

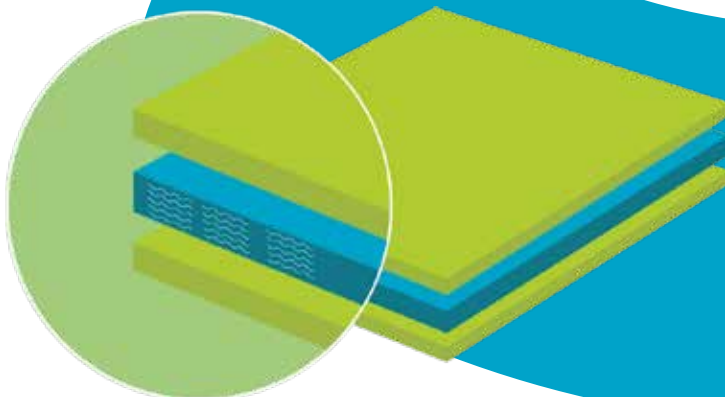
Years of researches have allowed us to identify a new material:

- capable of an improved **control of tooth movements** during the two weeks of usage;
- **more comfortable** for the patient during the initial hours of treatment, when some discomfort may be experienced.



Evoflex is a new stratified material, with a highly elastic internal layer which:

- Applies a more delicate initial **force** which, however, is **constant** during the two weeks of use of every F22 Aligner, accelerating and at the same time ensuring improved tooth movement control, for greater treatment effectiveness;
- is more comfortable for the patient, since it minimises possible pain during **progressive tooth movement**;
- has a **tear and tensile strength** 300% higher than the average of other materials;
- **does not get stained**, guaranteeing the aligner's transparency for the entire duration of the treatment.



The introduction of Evoflex will improve both your patients' comfort and the predictability of clinical outcomes, thanks to an enhanced control of tooth movements!

WHEN TO USE IT AND WHAT YOU CAN DO

The f22 system is recommended for the alignment of teeth during the orthodontic treatment of malocclusions

Using the F22 Invisible Aligner produced in Padua by Sweden & Martina at your clinical practice means offering your patients a state-of-the-art medical device, totally Made in Italy and developed with the scientific support of specialised orthodontists at the University of Ferrara.

After the aligner is assigned, the patient is guaranteed **constant monitoring** and **personalisation of treatment** according to the improvements observed. This method by successive steps allows assured results to be achieved in a shorter time.





**CUTTING-EDGE
TREATMENTS AND
CONTINUOUS MONITORING
FOR A **CONFIDENT SMILE****

TREATABLE CASES



CROWDING



DIASTEM



DEEP BITES



CROSS BITE



OPEN BITES

F22 aligners can be used to treat most adult or adolescent patients with:

- crowding;
- diastema;
- bolton Index discrepancies that do not require prosthetic restorations or stripping for complete correction;
- irregular gingival gum profiles in patients with worn or irregular teeth;
- light or moderate open or deep bites.

It is however the responsibility of the dentist to make correct diagnoses, to monitor treatments and to check that aligners adhere perfectly to the teeth in all treatment phases.

F22 can be used to treat an entire arch (one or two arches) or only the front teeth, from canine to canine (one or two arches). In this instance, cases of extractions, occlusal modifications of posterior sectors or significant variations of the median line cannot be accepted;

- F22 is suitable for patients whose permanent secondary molars have completely erupted;
- severe rotations cannot be treated with aligners;
- it may be necessary to use auxiliaries and additional devices in association with aligners, such as buttons, elastics, attachments, divots or other simple devices.

Each case will be analysed by a tutor with whom the feasibility of the treatment and the possible therapeutic options can be discussed with the apposite online chat.

Conditions that may make treatment with F22 inadvisable or impossible

CONDITION	OPTIONS	
Teeth not completely erupted or mixed dentition	<ul style="list-style-type: none"> • delay the start of treatment 	
Correction of significant skeletal problems	<ul style="list-style-type: none"> • use a limited treatment to correct alignment but not the skeletal condition • align the teeth with F22 in preparation for surgery, and then use before the surgical operation 	
FULLY PREDICTABLE MOVEMENTS	SCARCELY PREDICTABLE MOVEMENTS	UNPREDICTABLE MOVEMENTS
Tipping	distalisation over 2 mm	radicular torque
Intrusion	rotations above 40° for incisors or 30° for molars	body movement

STEPS OF TREATMENT

BEFORE TREATMENT:

Open day

Upon request, a Digital Specialist will work with you to collect patient cases and answer any of your questions.

Free preliminary assessment

Once uploaded the required information, you will receive a first disclaimer on the feasibility of the case*. For more information and details on the preliminary assessment, go to pag. 31.

Setup

After the free preliminary assessment, you can proceed to the official setup for a more precise and definitive assessment. Once the case is received, our experts will contact you to define together the appropriate treatment. You can preview the result in 3D.

DURING TREATMENT:

Delivery of the aligners

You will receive a kit containing all the aligners to start the treatment with F22.

Regular check ups

About every two weeks, you will check your patient's treatment progress and deliver their new aligners.

Assistance

If you have any doubts or questions, you can contact the tutor dedicated to your patient's case.

AFTER TREATMENT:

Whitener

If the patient wants to brighten his or her smile, recommend F22 PERFECTION, specially designed to be used with the aligners without having to take new impressions or make dedicated aligners.

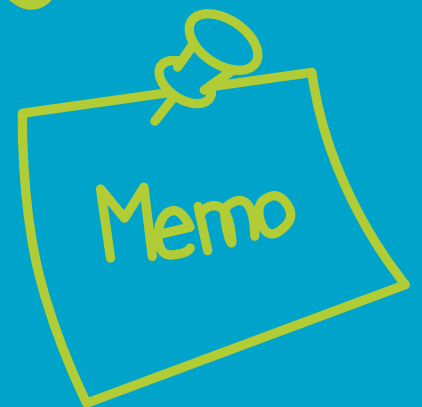
Maintain your smile

To protect your patients' smiles over time, prescribe F22 FIX maintenance retainers.

Assistance

If you like, you can document the case and send it to Sweden & Martina to be published on the Clinical Cases or in the Patient Success Stories pages.

* The case can be sent directly without first requiring the Free Preliminary Assessment



STEPS OF **TREATMENT**

NEW FREE PRELIMINARY ASSESSMENT



The free preliminary evaluation has been introduced to help the customer experience.

Within 24/48 hours from the evaluation request, a tutor from the F22 Team will upload the **preliminary evaluation of the case in the reserved area for the clinician, together with: the feasibility of the case** with F22, an **indication of the range of aligners required** to obtain the result (0-12 / 12-24 / more than 24) and if **additional treatments are necessary**.

The clinician should upload to the portal

- personal details and medical history,
- photographs;
- desired results;
- Orthopantomography (not mandatory but strongly recommended)
- Digital or analogue impressions (not mandatory but strongly recommended)



For a more precise and definitive diagnostic assessment, you can proceed with the official Setup uploading to the portal: Orthopantomography (if not loaded yet), the X-ray in lateral projection of the cranium (strongly recommended) and the digital or analogue impression.

OPEN DAY

The clinician who decides to collaborate with F22 can request **to organize** in his own clinic a **dedicated Open Day** during which one of our specialists will help him take impressions, explain treatment and answer all patient questions.

The clinician may request the preliminary assessment of the case, obtaining in 24-48 hours a general indication on the feasibility of the case.



In occasion of the Open Day the clinician will receive:



Flyers customized with the date of the open day and the information/ contacts of the clinic



The **social media pack**: four posts that can be published on social media to promote the Open Day



Video F22 for the waiting room



Roll Up



Poster



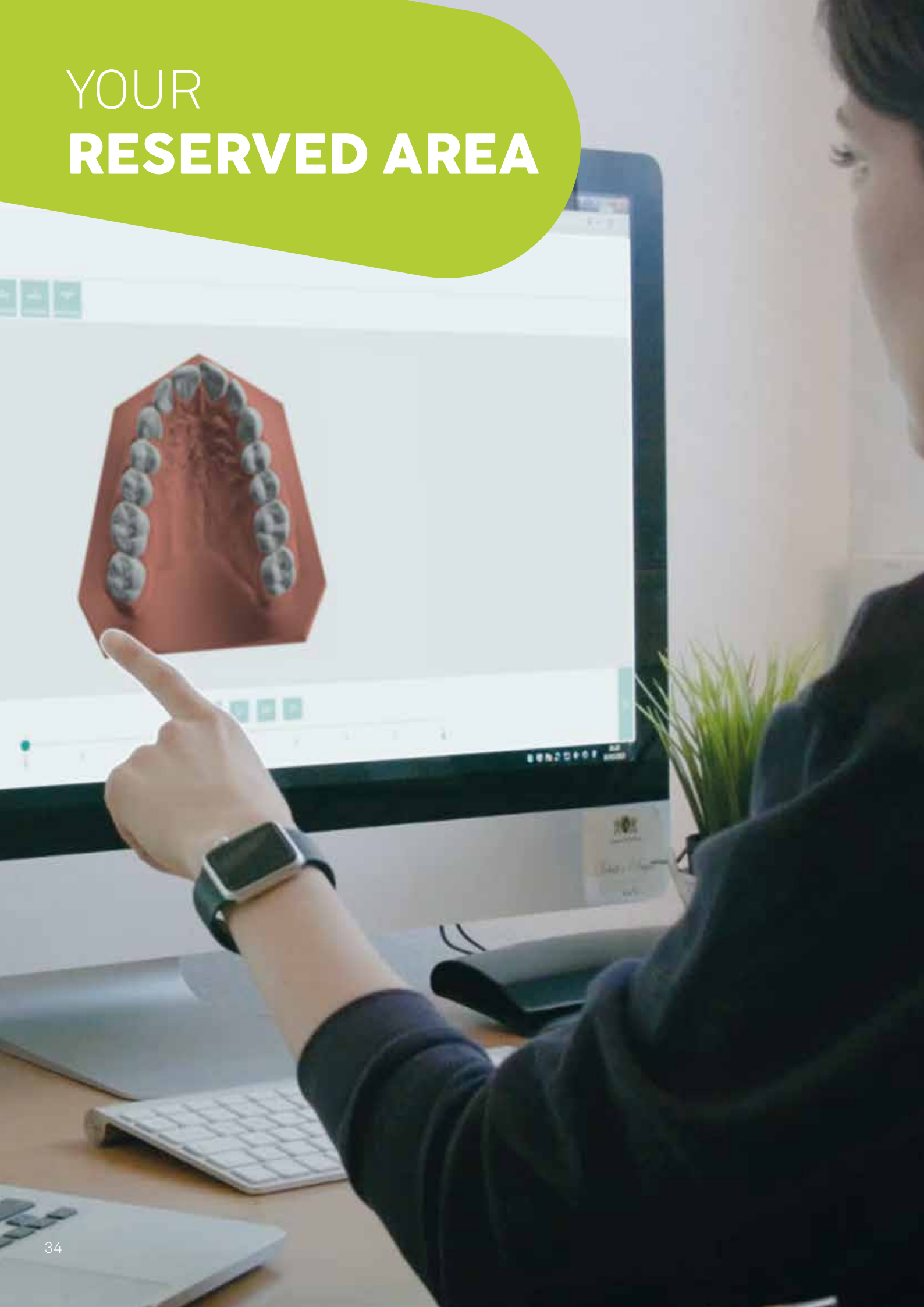
Demonstration model with aligner

OPEN DAY

THE F22 HAPPENING IN YOUR STUDIO



YOUR RESERVED AREA



THE RESERVED AREA OF THE WEBSITE F22ALIGNER.COM, SMARTPHONE-OPTIMISED, OFFERS A COMPEHENSIVE VIEW OF THE INSERTED CASES.



ALL IN ONE

All the information on one page: patient data, chat, attachments, simulator and progress timeline.



3D SIMULATOR

Innovative 3D simulator with integrated chat.



TUTORING

Digital tutoring system with dedicated expert.



MOBILE

Mobile optimisation of all the platform to manage one's cases also from the smartphone.

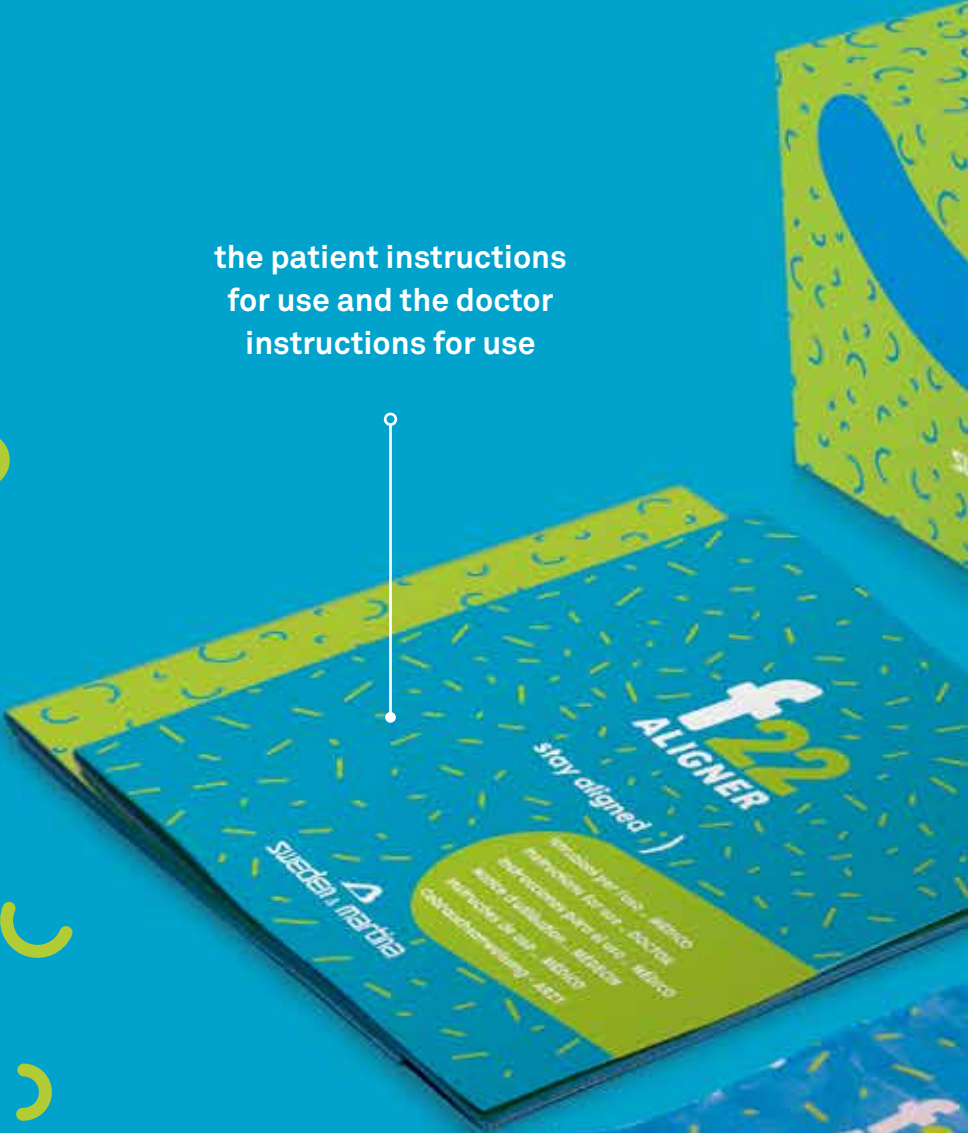


FREE PRELIMINARY ASSESSMENT

Max. 24-48h for a first indication of the feasibility of the case

INSIDE THE BOX F22:

the patient instructions
for use and the doctor
instructions for use



the aligners





F22 flat
pochette



the exclusive case for
the aligners, to be
handled to the patient



F22 PERFECTION
(to purchase separately)





stay aligned ;)



rev. 06-20



Sweden & Martina S.p.A.

Via Veneto, 10
35020 Due Carrare (PD), Italy
Tel. +39.049.9124300
Fax +39.049.9124290
info@sweden-martina.com
www.sweden-martina.com

Sweden & Martina Ltd

Unit 1b
Amberley Court, Whitworth Road
Crawley, West Sussex, RH11 7XL
Toll free 0800 1123575
info.uk@sweden-martina.com

Sweden & Martina Inc.

Distributor for U.S.
4700 S Mill Ave, Ste B-16
PO Box 23748 - Tempe, AZ 85282
Toll free 1-844-8MARTINA (1-844-862-7846)
info.us@sweden-martina.com
www.sweden-martinainc.com

Sweden & Martina Mediterranea S.L.

España - info.es@sweden-martina.com
Sweden & Martina Lda
Portugal - info.pt@sweden-martina.com

F22 aligners are "custom-made" medical devices. Sweden & Martina is registered with the Italian Health Ministry as a manufacturer of "custom-made" medical devices. The Declaration of Conformity consigned to the client guarantees the conformity of the product. F22 PERFECTION is a cosmetic, fulfilling EC Reg 1223/2009.



Contents are correct at the time of publication. Please contact Sweden & Martina SpA for information on any subsequent updates.